

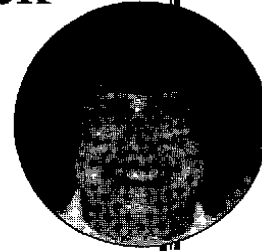


**TEXAS AND
POINTS WEST
PAPERS IN HONOR OF**

**John A. Hedrick and
Carrol P. Hedrick**



Edited by:
Regge N. Wiseman
Thomas C. O'Laughlin
and Cordelia T. Snow



CONTRIBUTORS

- | | |
|----------------------|------------------|
| Paul N. Backhouse | Alan L Phelps |
| William B. Boehm | Elton R. Prewitt |
| Theodore R. Frisbie | Deni J. Seymour |
| Eileen Johnson | Jay W. Sharp |
| David T. Kirkpatrick | S. Alan Skinner |
| Harvey C. Leake | David H. Snow |
| Stephen K. Mbutu | C. Dean Wilson |
| Ronald van Oeveren | John P. Wilson |
| Thomas C. O'Laughlin | Regge N. Wiseman |

**. THE ARCHAEOLOGICAL
SOCIETY OF NEW MEXICO: 33**

-2007-

TABLE OF CONTENTS

List of Figures and Tables	1v	Elton R. Prewitt	
Preface	vii	<i>Observations on Archaeology in the Delaware Mountains, Culberson County, Texas</i>	101
Carol Hedrick		Deni J. Seymour	
<i>John Allen Hedrick and Carrol Prothro Hedrick</i>	1	<i>Sexually Based War Crimes or Structured Conflict Strategies: An Archaeological Example from the American Southwest</i>	117
Stephen K. Mbutu		Jay W Sharp	
<i>The John A. Hedrick Trans-Pecos Artifact Collection</i>	7	<i>A Soldier of the Trails</i>	135
Paul N. Backhouse and Eileen Johnson		S. Alan Skinner and Ronald van Oeveren	
<i>Exploring Prehistoric Lifeways in the Shadow of the Llano Estacada: Recent Research in the Upper Brazos</i>	19	<i>A Stranger Came to Texas</i>	155
Theodore R. Frisbie		David H. Snow	
<i>The Kiva Crew at Pottery Mound: 1960-1961</i>	39	<i>La Ciudad: Pottery Mound Revisited</i>	163
David T. Kirkpatrick and William B. Boehm		C. Dean Wilson	
<i>The El Paso & Southwestern Railroad: An Archival and Archaeological Perspective</i>	57	<i>Insights from Powhoge Polychrome at Archaeological Sites</i>	175
Harvey C. Leake		John P. Wilson	
<i>The Wetherills, the Bureau of Ethnology and Mesa Verde: A Difference of Perspective</i>	71	<i>Suppression of the Kivas in New Mexico's Indian Pueblos: 1675-1714</i>	185
Thomas C. O'Laughlin		Regge N. Wiseman	
<i>Yellow Deer Cave</i>	81	<i>On the Relationship between the Largo-Gallina and the Jemez</i>	201
Alan L Phelps			
<i>Northwestern Chihuahua, Mexico: Evidence of a Paleoindian Presence on Four Ranches</i> ..	93		